

Life Science unlimited

Innovative Nucleic Acid Technologies



innuPREP Cleanup Kits

Purification of PCR products

innuPREP PCRpure Kit

The innuPREP PCRpure Kit is an extreme fast and efficient tool for purification of PCR products from PCR reaction mixtures. It also can be used to concentrate those PCR products. The kit is based on 3 minutes two-step-procedure (Bind and Elute). No washing and drying steps are necessary. The process of purification of PCR products allows the recovery of PCR products from 60 bp up to > 30 kb with a high recovery of 75 – 95 % (depends on length of fragments).

Starting material

- PCR reaction mixtures up to 50 µl

Fragment length

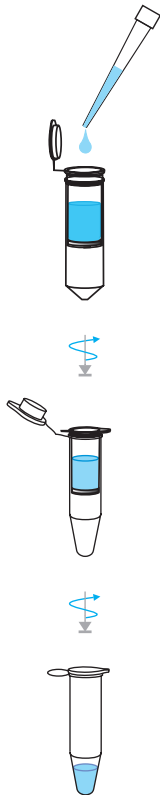
60 bp – 30 kb

Rate of recovery

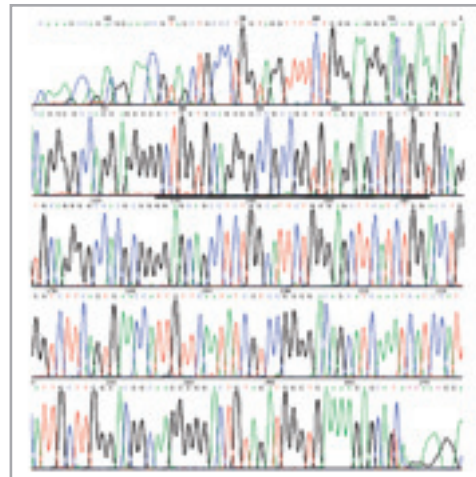
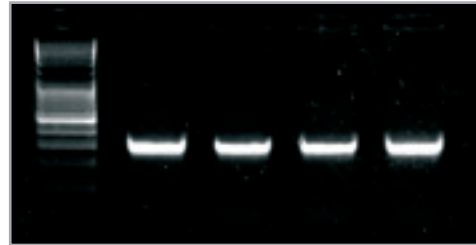
75 – 95 %, depends on length of PCR fragments

General Principle – Purification of PCR products

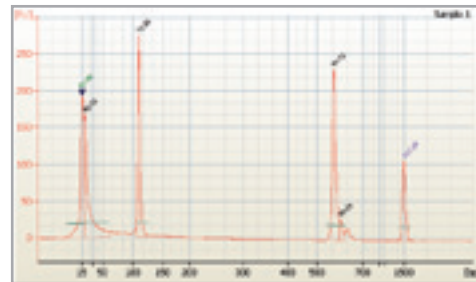
Bind – Elute



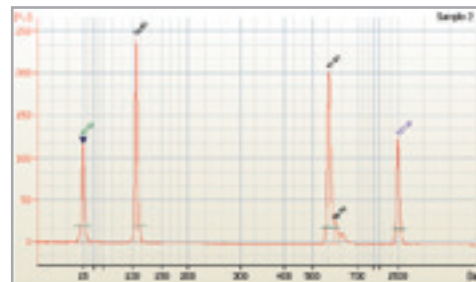
Amplification of a 270 bp fragment of human TP53 gene.
Purification of PCR product and subsequent DNA sequencing.



Efficient primer removing before purification



Efficient primer removing after purification



Purification of DNA from agarose gels

innuPREP Gel Extraction Kit

As a very efficient tool, the innuPREP Gel Extraction Kit is determined for extraction and recovery of DNA fragments from TAE or TBE agarose gels. The kit combines the initial gel solubilisation with subsequent binding of DNA fragments on a spin filter surface. After a washing step the DNA fragments will be eluted from the spin filter.

All buffers are optimized to obtain a high rate of recovery and purity of DNA fragments. The extracted and purified DNA fragments are ready to use for further downstream applications.

Starting material

- TAE or TBE agarose gels (up to 150 mg)

Time for isolation

Approximately 20 minutes

Fragment length

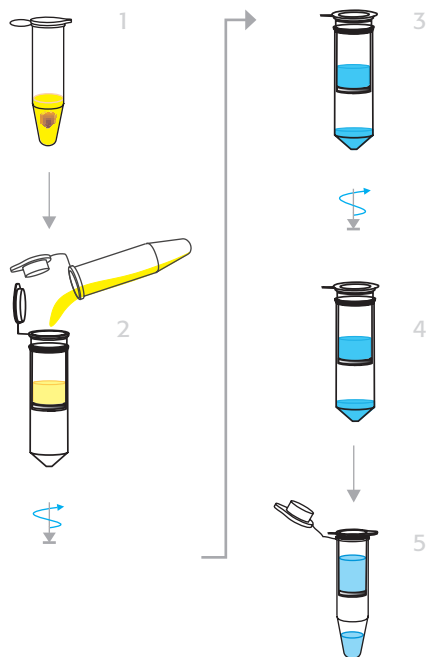
100 bp – 30 kb

Rate of recovery

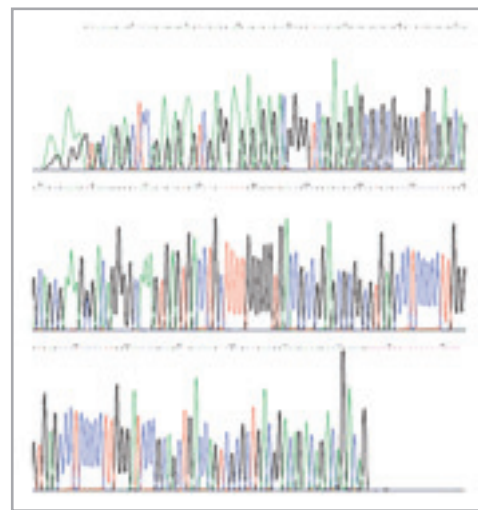
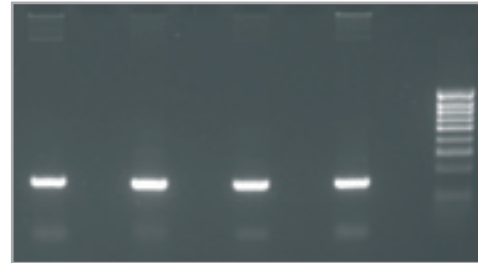
75 – 95 %, depends on length of DNA fragments

General Principle – Gel Extraction

Gel solubilisation – Bind – Wash – Elute

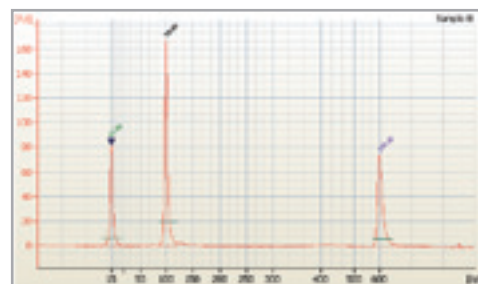


Quality of the gel extraction procedure for subsequent DNA sequencing: PCR samples (260 bp) before the gel extraction and corresponding gene sequence using purified DNA fragments.

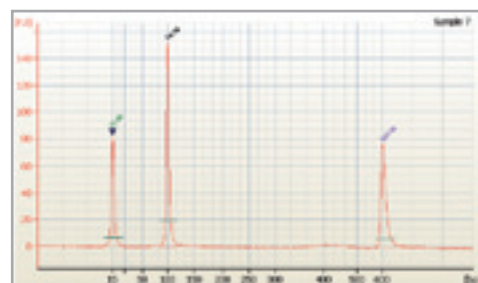


Recovery of a 98 bp DNA fragment from a 2.0 % TAE agarose gel; Determination of the rate of recovery using Bioanalyzer. Rate of recovery for the 98 bp DNA fragment: 85 %

98 bp DNA fragment



DNA recovery of a 98 bp DNA fragment



Catalog number	Product
845-KS-5010010	innuPREP PCRpure Kit (10)
845-KS-5010050	innuPREP PCRpure Kit (50)
845-KS-5010250	innuPREP PCRpure Kit (250)
845-KS-5030010	innuPREP Gel Extraction Kit (10)
845-KS-5030050	innuPREP Gel Extraction Kit (50)
845-KS-5030250	innuPREP Gel Extraction Kit (250)
845-KS-5050010	innuPREP DOUBLEpure Kit (10)
845-KS-5050050	innuPREP DOUBLEpure Kit (50)
845-KS-5050250	innuPREP DOUBLEpure Kit (250)
845-KS-5020010	innuPREP DYEpure Kit (10)
845-KS-5020050	innuPREP DYEpure Kit (50)
845-KS-5020250	innuPREP DYEpure Kit (250)